

User's Manual

Model 707035/707036 WE7035/WE7036 Optical Interface Card

This User's Manual contains information about the installation procedures of the optical interface card WE7035/WE7036 for the PC-based measurement instruments, WE7000. For other information about the functions and specifications of the module, read the WE7000 User's Manual, IM707001-01E.

Trademarks

Microsoft, Windows, and Windows NT are either registered trademarks or trademarks of Microsoft Corporation in the United States and/or other countries. Adobe and Acrobat are trademarks of Adobe Systems incorporated.

Disk No. WE07

4th Edition : May 2002 (YK)

All Rights Reserved, Copyright © 1999, Yokogawa Electric Corporation

YOKOGAWA
Yokogawa Electric Corporation

IM 707035-01E 4th Edition

1. Checking the Product

The name plate is located on the rear side of the optical interface card. Check that the model name given on the name plate matches that on the order.

MODEL

Model	Description
707035	WE7035 optical interface card for PCs with PCI bus (half size), 1 port
707036	WE7036 optical interface card for PCs with PCI bus (half size), 2 ports

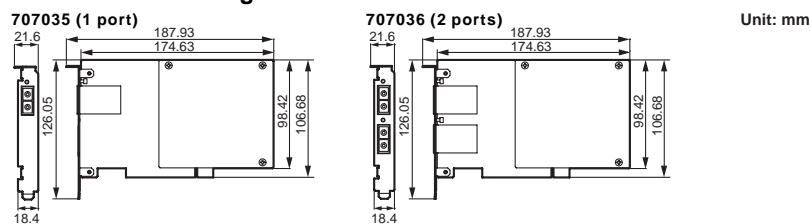
NO.

When contacting your dealer, please quote the instrument No.

Storage environment

Temperature: -20 to 60°C Humidity: 20 to 80% RH (no condensation)

Dimensional Drawings



* For detailed specifications of the optical interface card, see the PC-Based Measurement Instruments WE7000 User's Manual (IM707001-01E).

2. PC System Requirements

PC

PC on which Windows 95/98/Me, Windows NT 4.0, Windows 2000 Pro, or Windows XP Professional/Home Edition runs.

CPU: Pentium 166 MHz or higher PCI Bus: PCI bus expansion slot (half size)

Drive

One CD-ROM drive

OS

Microsoft Windows 95/98/Me, Windows NT 4.0, Windows 2000 Pro, or Windows XP Professional/Home Edition

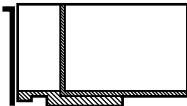
3. Installing the optical interface card

Follow the instruction manual that came with your PC to install the optical interface card to the PCI expansion card connector.



Warning

- Turn OFF the PC and peripheral devices and remove all cables before installing the card. Otherwise, electric shock or damage may result. Check that the temperature inside the PC is adequately low before starting work. If the card is installed while the temperature is high, you may receive burns.
- If abnormal symptoms such as smoke, strange odors, or noise occur, turn OFF the PC immediately and unplug the power cord.
- Do not touch the surface of the optical interface card or the section that is shaded in the figure below. You can injure your skin with the IC pins, the corners and burr of the card, and the notch of the bracket.



Caution

- When opening the PC's cover, make sure to turn OFF the PC and follow the instructions given in the manual that came with the PC.
- Do not handle the optical interface card with wet hands.
- Do not disassemble or alter the optical interface card. This can damage the card. If repairs are needed, contact your nearest YOKOGAWA dealer.
- Before working, touch a grounding terminal to remove the static electricity that has built up on the surface of your body and clothes. Otherwise, static electricity may damage the optical interface card.
- When storing or transporting the optical interface card, place the card inside a conductive bag or anti-static bag. If the packaging is not adequate, the static electricity may damage the optical interface card.
- Never touch the section of the optical interface card that is to be inserted into the PCI Bus slot (the plating section). Bad contacts caused by stains can cause malfunction.
- If there is dust or other particles built up in the PCI Bus slot, clean it before installing the optical interface card.
- Be cautious not to let parts of cards installed in adjacent slots or the PC come in contact with the optical interface card. This can damage the card.
- Make sure to secure the bracket section of the optical interface card to the PC using screws. If the card happens to come out of the socket, it can cause malfunction or damage the card.

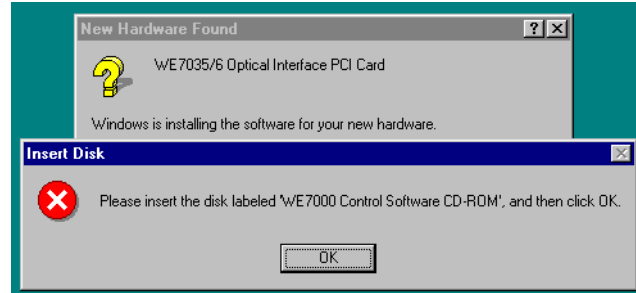
4. Installing the Driver and Allocating Resources

Follow the procedure below to install the driver and allocate resources for the optical interface card.

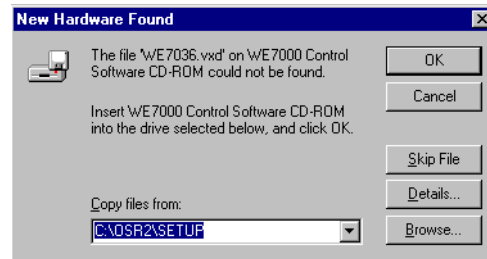
For Windows 95

[Installing the driver and allocating resources]

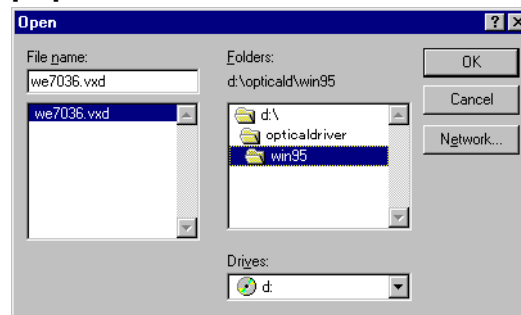
- Start Windows 95.
- If the PC is connected to a network environment or a user profile has been set, a dialog appears for you to enter a username and password. Enter the username and password in the entry box and click [OK].
- The optical interface card is automatically detected, and the following dialog box appears.



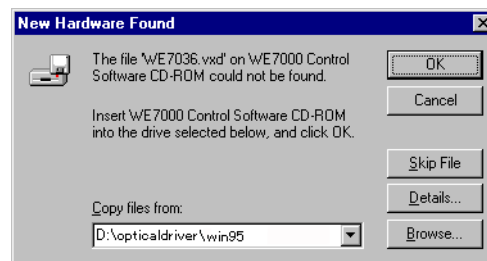
- Click [OK] and place the WE7000 Control Software Setup Disk (CD-ROM, Ver. 3.1.2.0 or later), which is included with the measuring station, into the CD-ROM drive.
- In the dialog box that appears, click [Browse].



- In the next dialog box that appears, select the CD-ROM drive for [Drives:], [opticaldriver\win95] for the folder name, and [we7036.vxd] for the file name. Click [OK].



- In the following dialog box, click [OK]. The driver is installed.



- Restart the PC to allocate resources.

[Confirming the driver installation]

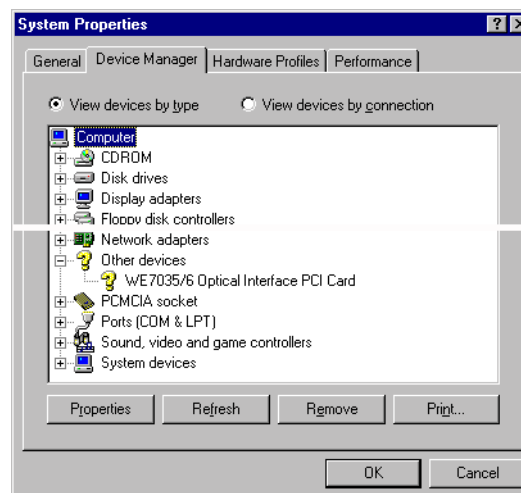
When an ISA card is installed in your PC or there is no vacant IRQ, the card may not operate properly. Follow the procedure below to confirm that the device is working properly.

- Double-click the [System] icon in the [Control Panel] window.



- Click the [Device Manager] tab.

When the card is operating properly, [WE7035/6 Optical Interface PCI Card] is displayed under [System Properties] > [Device Manager] > [Other devices]. See the figure below.



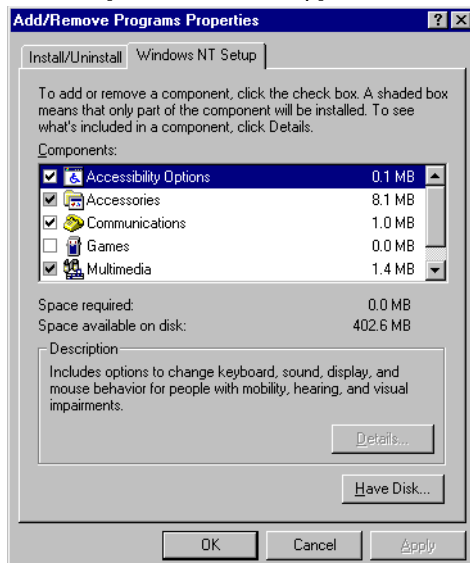
Note

If an "X" mark or "!" mark is displayed on top of the "?" mark icon, the card is not operating properly. In this case, select [WE7035/6 Optical Interface PCI Card] and click [Remove] to remove the driver. Next, click [Computer] that is displayed at the top of the list and click [Properties]. In the [Computer Properties] dialog box that appears, check the resource allocation. Change the IRQ allocation, for example, so that resources can be allocated to the WE7035/WE7036 optical interface card. Then, reinstall the driver for it.

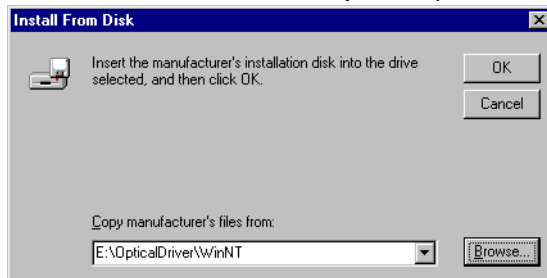
For Windows NT

[Installing the driver and allocating resources]

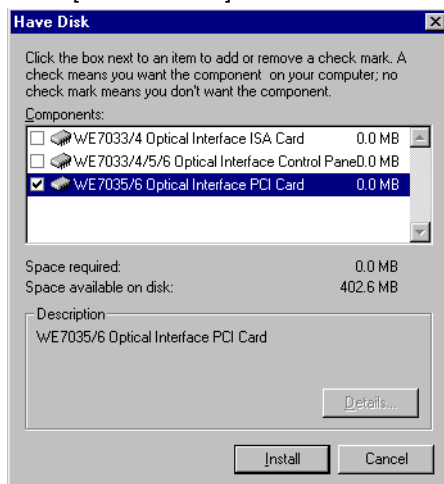
1. Start Windows NT.
2. Press the [Ctrl]+[Alt]+[Delete] keys to display the dialog box for entering the user name and the password. Log on using a user name that is a member of Administrator.
3. Place the WE7000 Control Software Setup Disk (CD-ROM, Ver. 3.1.2.0 or later) that is included with the measurement station into the CD-ROM drive.
4. Click the [Start] button, point to [Settings], and then click [Control Panel]. The [Control Panel] dialog box appears.
5. Double-click the [Add/Remove Programs] icon.
6. Click the [Windows NT Setup] tab, then click [Have Disk].



7. The [Install From Disk] dialog box appears. In the [Copy manufacturer's files from] entry box, enter the CD-ROM directory where the file [WE7000.inf] is located (if the CD-ROM drive is E, the directory is E:\OpticalDriver\WinNT) and click [OK].



8. In the [Components] box of the [Have Disk] dialog box that appears, select [WE7035/6 Optical Interface PCI Card] and click [Install].
By selecting the [WE7033/4/5/6 Optical Interface Control Panel] check box, the [WE7000 Optical] icon, which opens the dialog box used to check resources, is created in the [Control Panel].



9. Restart the PC to allocate the resources.

Note

If the PC does not restart properly, the resource allocation may be in conflict. In this case, remove the PCI card and restart the PC. Then, take measures to solve the conflict such as changing the resource allocation.

[Checking the resource allocation]

Check the resource allocation using [Administrative Tools (Common)] > [Windows NT Diagnostics].

For Windows 98/Me, Windows 2000 Pro or Windows XP

If you are using Windows 98/Me, read the file WE7035Readme98EMe.pdf in the \OpticalDriver\Win98 (or \WinMe) folder on the WE7000 Control Software Setup Disk (CD-ROM) that came with the measuring station. If you are using Windows 2000 Pro, read the file WE7035ReadmeE2000.pdf in the \OpticalDriver\Win2000 folder. If you are using Windows XP, read the file WE7035ReadmeEXP.pdf in the \OpticalDriver\WinXP folder. You can also see the following Web page.

<http://www.yokogawa.com/tm/Bu/WE7000/support.htm>

Measures to solve resource allocation conflicts

If the resource that is in conflict can be removed, remove it.

If it is in conflict with the IRQ of another ISA card that is being used, change the IRQ of the ISA card. If the IRQ of the ISA card can be reserved through BIOS settings, reserve the IRQ and restart the PC.

Note

- To uninstall the driver on Windows 95/98/Me/2000 Pro/XP, delete [Other devices] > [WE7035/6 Optical Interface PCI Card] from the [Control Panel] > [System Properties] > [Device Manager] dialog box. On Windows NT, delete it from the [Control Panel] > [Add/Remove Programs] dialog box.
- For the procedure regarding the setup and operation of the WE7000 Control Software, see the PC-Based Measurement Instruments WE7000 User's Manual (IM707001-01E).